

# SEVENCrane

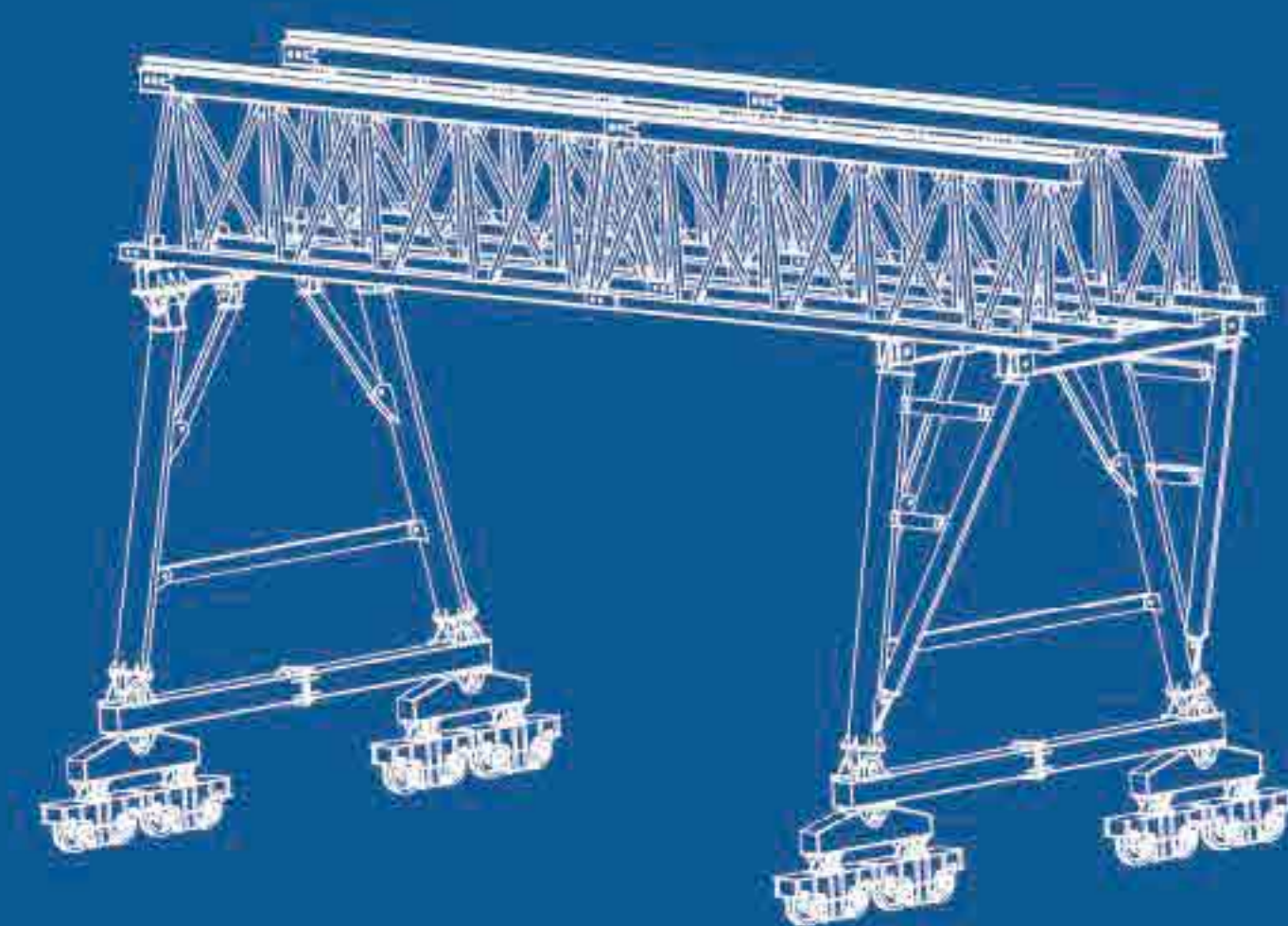
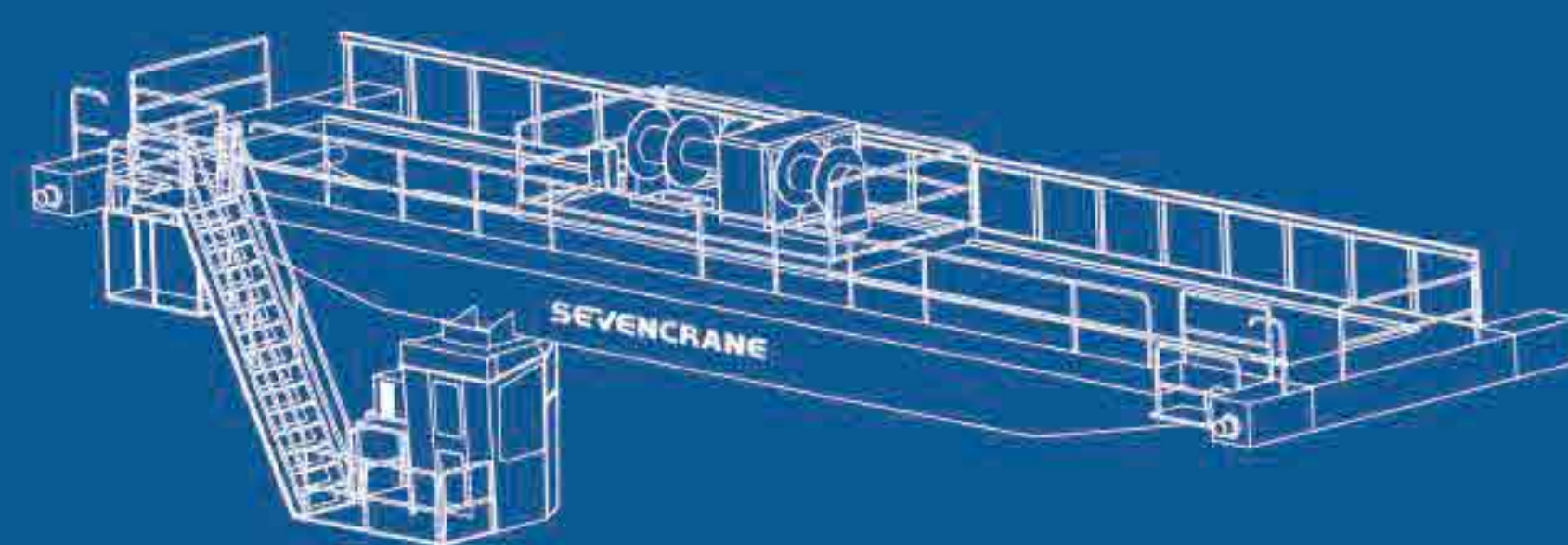
## COMPANY PROFILE

SEVENCrane

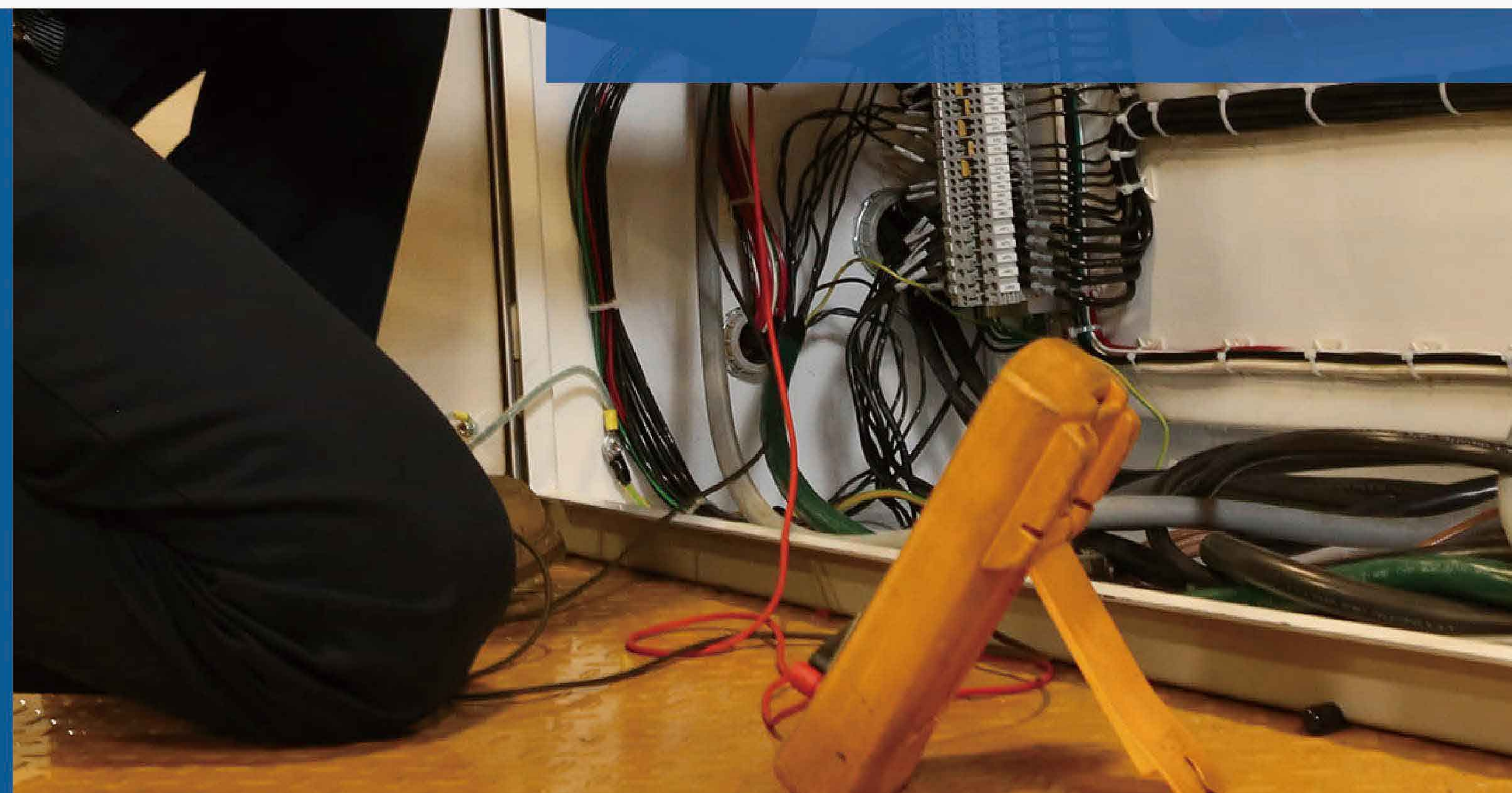
SEVENCrane

SEVENCrane

■ Henan Seven Industry Co., Ltd



web: [www.sevencrane.com](http://www.sevencrane.com)  
Email: [info@sevencrane.com](mailto:info@sevencrane.com)  
Tel: (00)86-371-55576206  
Mob&WhatsAPP&Wechat: (00)86-182-37120067  
Address: Crane Industrial Park, Changyuan, Xinxiang City, Henan province, China.

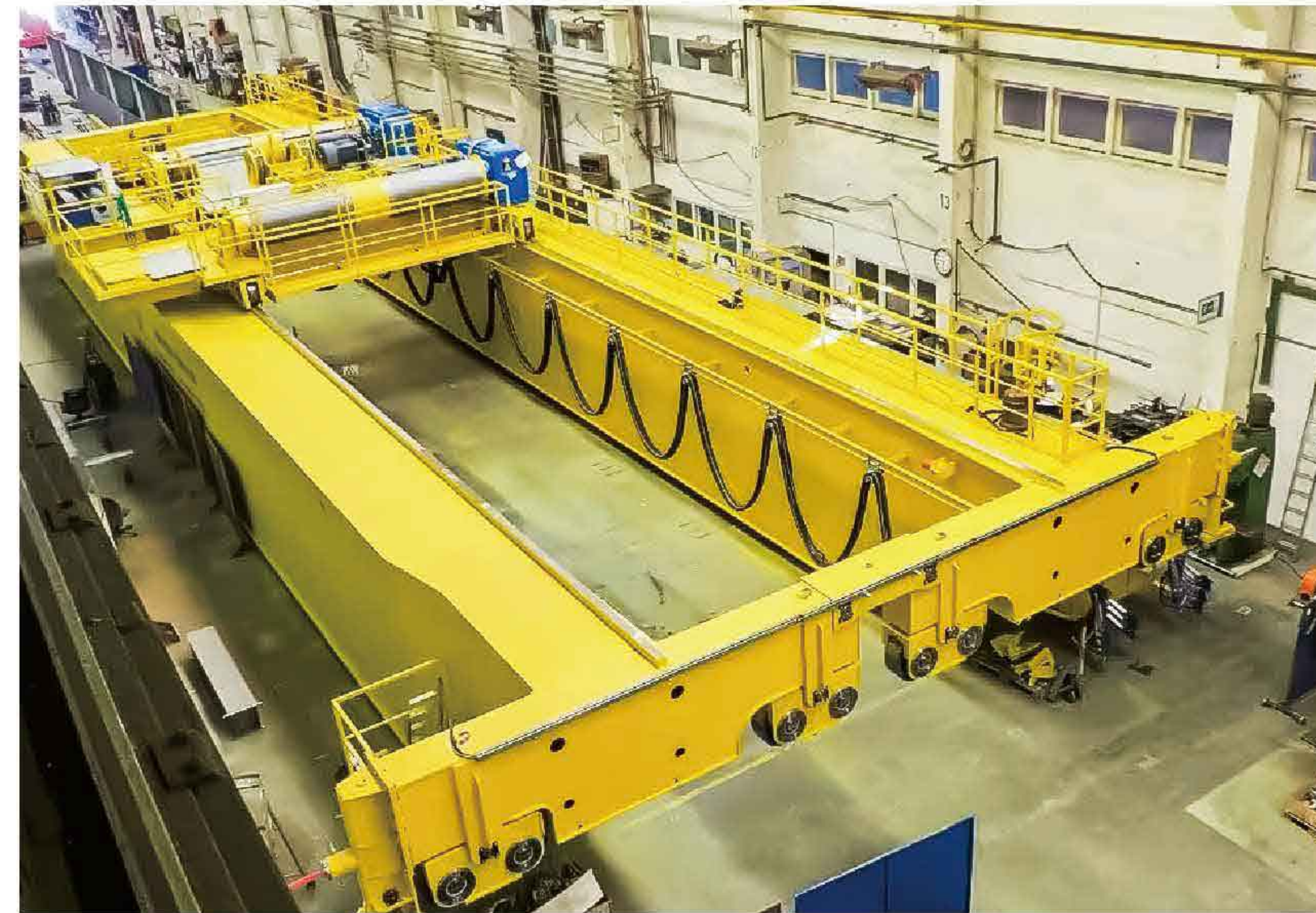




## INDUSTRIAL CRANE

---

The industrial overhead crane is installed in the machining workshop.



## GANTRY CRANE

---

Double girder gantry crane installed in the factory to lifting heavy cement.



## OVERHEAD CRANE

---

This overhead crane is made of special materials with high quality and high temperature resistance.

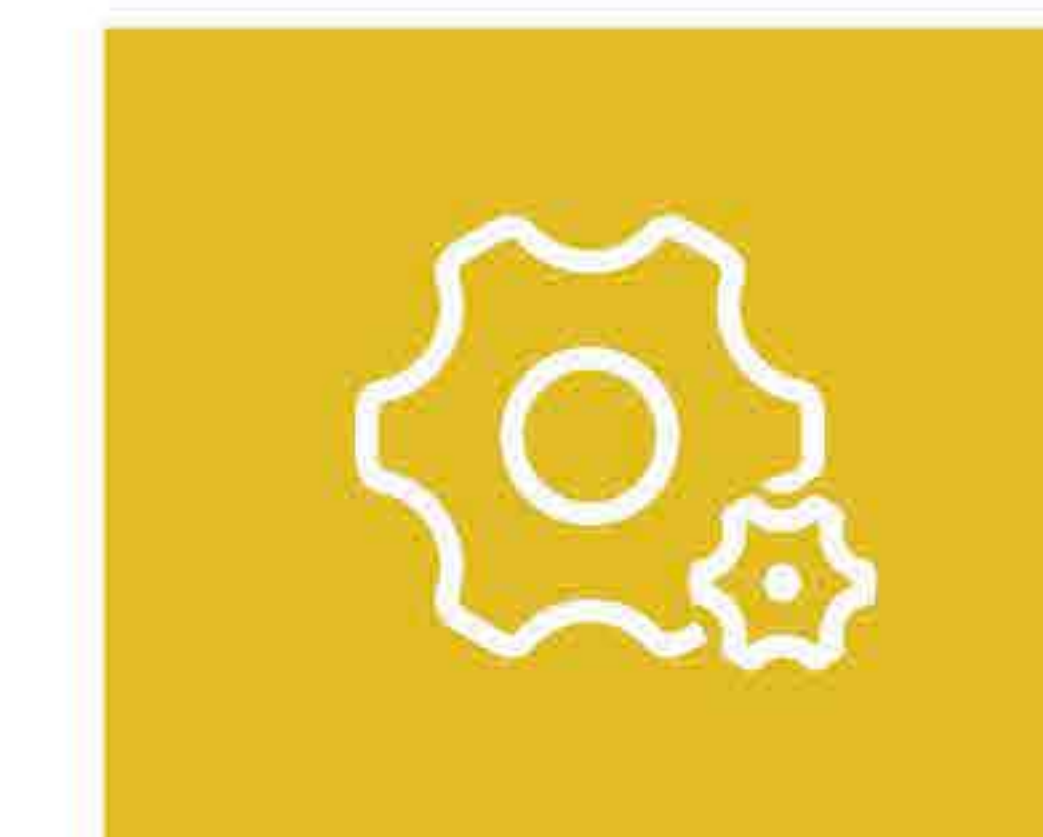


## BASIC INTRODUCTION

---

Our company adopts European standards and combines years of crane knowledge and experience, industry experience and engineering technology to establish the SEVENCRAVE brand. We are committed to provide high-quality products and perfect services for distinguished customers and help customers carry out lifting and handling work easily and quickly. Moreover, our products can also help customers improve work efficiency, and contribute support to the development and expansion of customer companies and businesses.

Through years of development and inspection in the industry, the SEVENCRAVE brand has won an excellent reputation. We have not only been praised by users, but also appreciated and imitated by competitors. Our company chooses international brands as our accessory's suppliers, and adopts European design, production, and inspection standards to provide world-class quality products and services. It is our job task to provide customers with the best lifting and handling solutions. When the overall crane solution and system are delivered to customers, all employees in SEVENCRAVE are glad to help customers realize their work value. We'd love to be involved in crane business with passion and perseverance.





# BASIC INTRODUCTION

We focus on the production of high-end European-style cranes. The main products include bridge cranes, gantry cranes, suspension cranes, garbage cranes, metallurgical cranes, multi-pivot and other special cranes, which are widely used in machinery, metallurgy, railways, automobiles, aviation, aerospace, nuclear power, petroleum, chemical, paper, mining, logistics and other fields. With the rapid development of the world's manufacturing industry, cranes have also entered the stage of intelligent development. In addition to commonly used cranes, we can also provide intelligent crane systems according to customer's actual needs and development plans. SEVENCRAANE's production equipment is in accordance with European standards. Our configuration includes a complete set of steel structure production lines such as uncoiling leveling, shot blasting, plasma cutting, intermittent welding, welding robots, and main beam gantry welding.







SEVENCRAANE

## BASIC INTRODUCTION

---

Our environmental protection equipment includes welding fume dust remover, plasma cutting dust remover, online monitoring of VOC waste gas treatment in mobile paint booth, etc. The company's "three wastes" emission standards meet the national requirements, ensuring the continuity of the company's production and effectively ensuring the construction period specified in the contract. The company has complete testing equipment, advanced production technology, and is equipped with high-end equipment such as CNC lathe, vertical machining center, welding robot, heavy-duty CNC floor milling and boring machine, which has laid a solid foundation for the manufacture of high-standard European cranes.

Our team has decades of rich management experience. It is a team that has matured through setbacks and tribulations in operation, technology, production, and sales. SEVENCRAANE is committed to creating value for customers, creating wealth for the society, and creating a happy life for employees. Taking the promotion of the development of the crane industry as our own responsibility, we will make every effort to seize the rare opportunity of market integration to achieve leapfrog development and strive to become the leader in the crane industry!



# COMPANY CONCEPT

## Respect life and protect environment

We improve the world without changing the environment and contribute to a sustainable planet.

## Passion

Passion create perfection and shape persistence. Each of our employees must have a passion for work and life.

## Sincerity

We attach importance to and continue to create a corporate culture of integrity, and require every employee to abide by the code of business conduct.

## Win-Win

To provide customers with products and services, to help customers develop, but also to reflect the value of our work. We hope to make progress together with our customers and achieve a win-win situation.

## Human First

All the efforts we have made are for the better development and happy life of people themselves, so putting people first is our primary value.

- Customer-centric, create value for customers.
- Safety and Convenience of Users.
- Growth and Happiness of Staff

## Sustainable Innovation

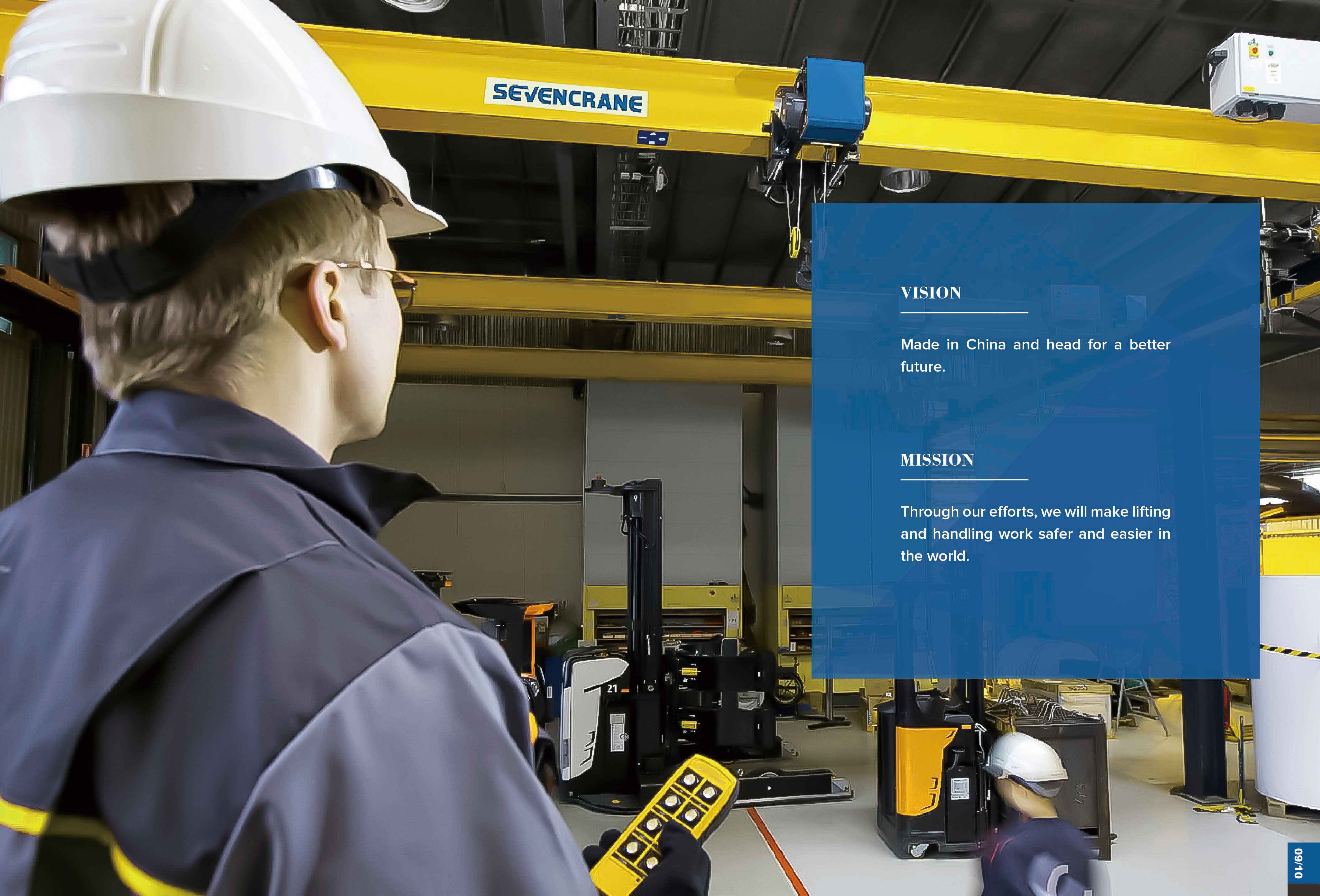
Only by continuous innovation can we provide better and better products and services, maintain the competitiveness of the company, and be at the forefront of world development.

## Act Fast

Quick action allows us to have extremely high work efficiency, so that we can successfully and quickly complete tasks and goals.







**SEVENCRANE**

## VISION

---

Made in China and head for a better future.

## MISSION

---

Through our efforts, we will make lifting and handling work safer and easier in the world.



# PART OF DEVELOPMENT HISTORY

## 2018

SEVENCRANE brand was established by a team with 20 years of experience in this field and then entered the crane manufacturing industry. Our factory is located in the largest crane production base in China - Changyuan, Xinxiang City, Henan Province.



## 2020

The construction of the new production workshop was completed, the installation of supporting production equipment was completed, and the production line was put into use. Besides, the production area of the whole factory reached 50,000 square meters.



## 2022

In-depth cooperation with German SWF company, and relying on the advanced technology and leading core components of German SWF company, our technical strength has been greatly improved, and the product quality has reached a new level.

## 2019

We passed ISO certification and EU/CE certification, which comprehensively improved the company's management level and development capabilities. We realized the modular production of hoists, end beams, wheel boxes and other components.



## 2021

The international market of SEVENCRANE was expanded to 60 countries and regions. 3500 square meters technology research and development building started construction smoothly, providing strong support for the long-term development of our enterprises.





# GLOBAL MARKET SCOPE



- Thailand
- Singapore
- Indonesia
- The Philippines
- Malaysia
- Russia
- U.S.A
- Britain
- Uzbekistan
- Kazakhstan
- Australia
- Guyana
- Hungary
- Haiti
- Cyprus
- Cameroon
- Malta
- Mexico
- Dominican
- Pakistan
- Ecuador
- Argentina
- Sri Lanka
- Costa Rica
- Lithuania
- Brunei
- Canada
- French Polynesia
- Chile
- Qatar
- Kuwait
- Brazil
- Israel
- Saudi Arabia
- Spain
- Trinidad and Tobago
- Bosnia and Herzegovina
- The United Arab Emirates
- Portugal
- Sweden
- Denmark
- Azerbaijan
- New Zealand

# SEVENCrane



# OUR PARTNERS

**SEW**  
EURODRIVE

**ABB**

**ABM** Greiffenberger Polska  
Wprawiamy pomysły w ruch

**HBC** radiomatic

**OHM** 欧姆

**SIEMENS**

**CHINT**  
CHINT ELECTRIC

**HEMPEL**

**DELIXI**  
ELECTRIC  
德力西电气

**Schneider**  
Electric

**YANMAR**

Authorized Distributor of  
**HYUNDAI**  
GLOBAL SERVICE

**JOTUN**

**首钢集团**  
SHOUGANG GROUP

**NCC**  
SOLUCIONES INTEGRALES

WE LOOK FORWARD TO YOUR JOINING >>>>



# PRODUCT DISPLAY



## Overhead Crane

The single girder overhead crane is installed in the factory.



## Overhead Crane

Double girder overhead cranes are used for lifting large equipment.



## Gantry Crane

The double girder gantry crane is used to lifting heavy steel.



## Jib Crane

The jib crane is being used to lift heavy ships at port.



# PRODUCT DISPLAY



## Gantry Crane

Double girder gantry crane is used in the iron and steel transportation industry.



## Overhead Crane

Double girder overhead crane with hook installed in the production workshop.



## Gantry Crane

Single girder gantry cranes with container lifting tool is installed outdoors.



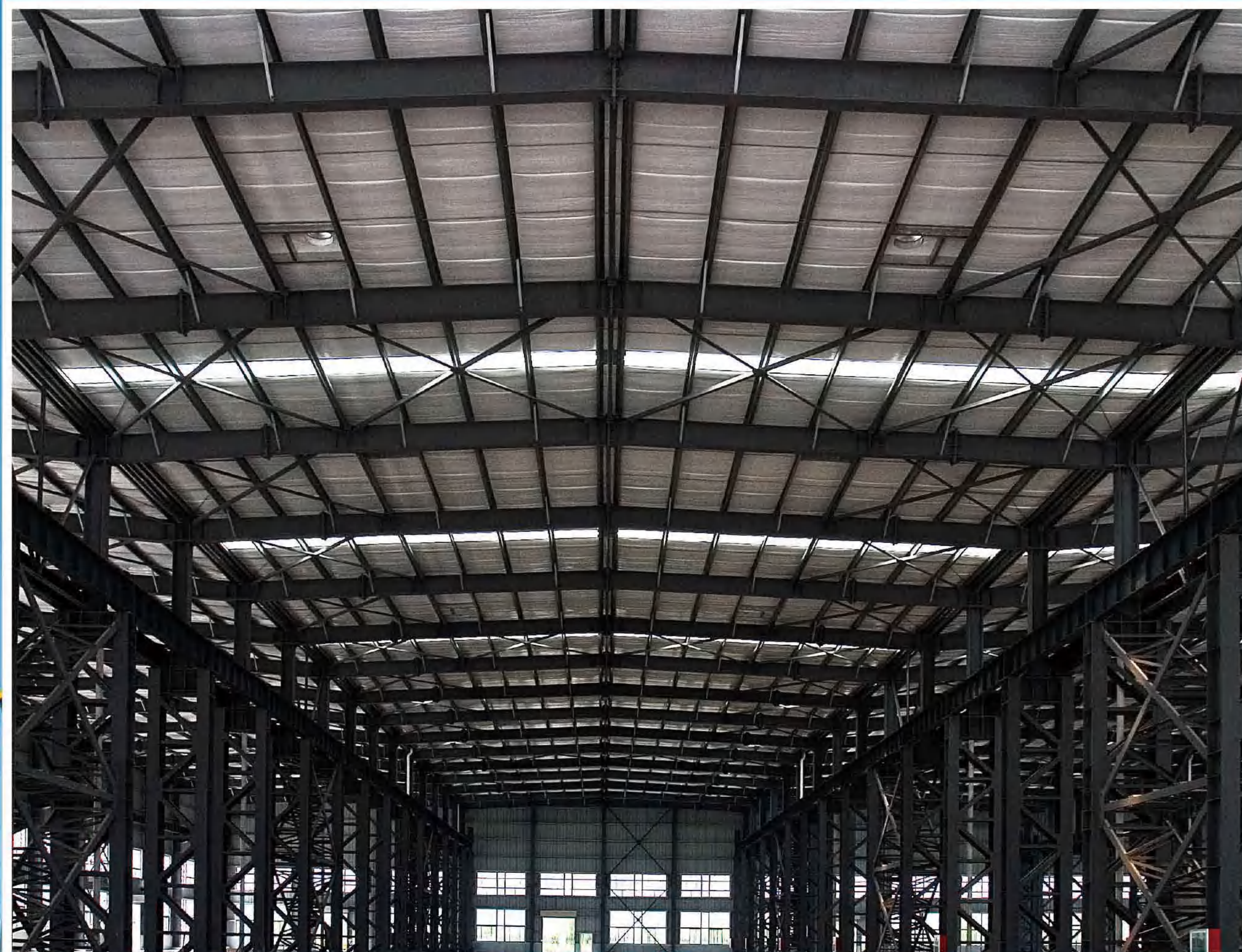
## Overhead Crane

The overhead crane with grab bucket is installed in waste power station.



# PRODUCT DISPLAY

---



REALISTIC PICTURE

## STEEL STRUCTURE WORKSHOP

We can customize steel structure factories for customers based on the site conditions of customer construction. The steel structure factory we produce is light weight, large span, and short construction periods. The construction of the factory is convenient to recycle non-pollution. In addition, our steel structure factory also has shock resistance and wind resistance.



3D MODEL



# SERVICE ITEMS

---



## SERVICE PRINCIPLES

### • Security

Safety is the first criterion. We must ensure the safety of each staff, including customers' employees and SEVEN-CRANE's employees. We hope that all employees can come to work happily and go home safely.

### • Production Efficiency

The purpose of our service is to help customers improve production efficiency and increase economic benefits. We must ensure that you can use the equipment efficiently under safe conditions.

### • Efficient and Professional

We have experienced technical engineers in the industry, as well as very professional supply chain, logistics and other partners. Excellent talents and stable and reliable partners are the guarantee to provide you with efficient and professional services.





# SERVICE ITEMS



## INDUSTRY EXPERIENCE

### • New product related services

Our new crane will inject new vitality into your business. We will design, produce and provide installation and commissioning services according to your needs.

### • Crane Maintenance

Many users often seek emergency repairs when the equipment breaks down or even becomes paralyzed, which causes huge downtime costs and even affects production efficiency. SEVENCRA NE provides crane maintenance services to keep the equipment in normal use, greatly reduce the failure rate, reduce downtime, reduce sudden failure and downtime losses, thereby reducing operating costs, prolonging the service life of equipment, improving equipment utilization, and effectively control operating costs.

### • Crane Upgrades



When your factory changes production line, workshop function or your requirements for crane technical parameters, even when your factory needs to be relocated, we will upgrade your cranes according to SEVENCRA NE design concept and brand quality assurance.

### • Crane Customization and Research

Cranes in special environments and spaces need special customization. For example, the clean room crane can be designed for the space with clean requirements, the explosion-proof crane can be provided for the space with explosion-proof requirements, and the crane with high waterproof grade can be provided for the space with moisture-proof requirements. Regardless of the requirements, we can do research and development design for customers and deliver our customized crane systems to them.

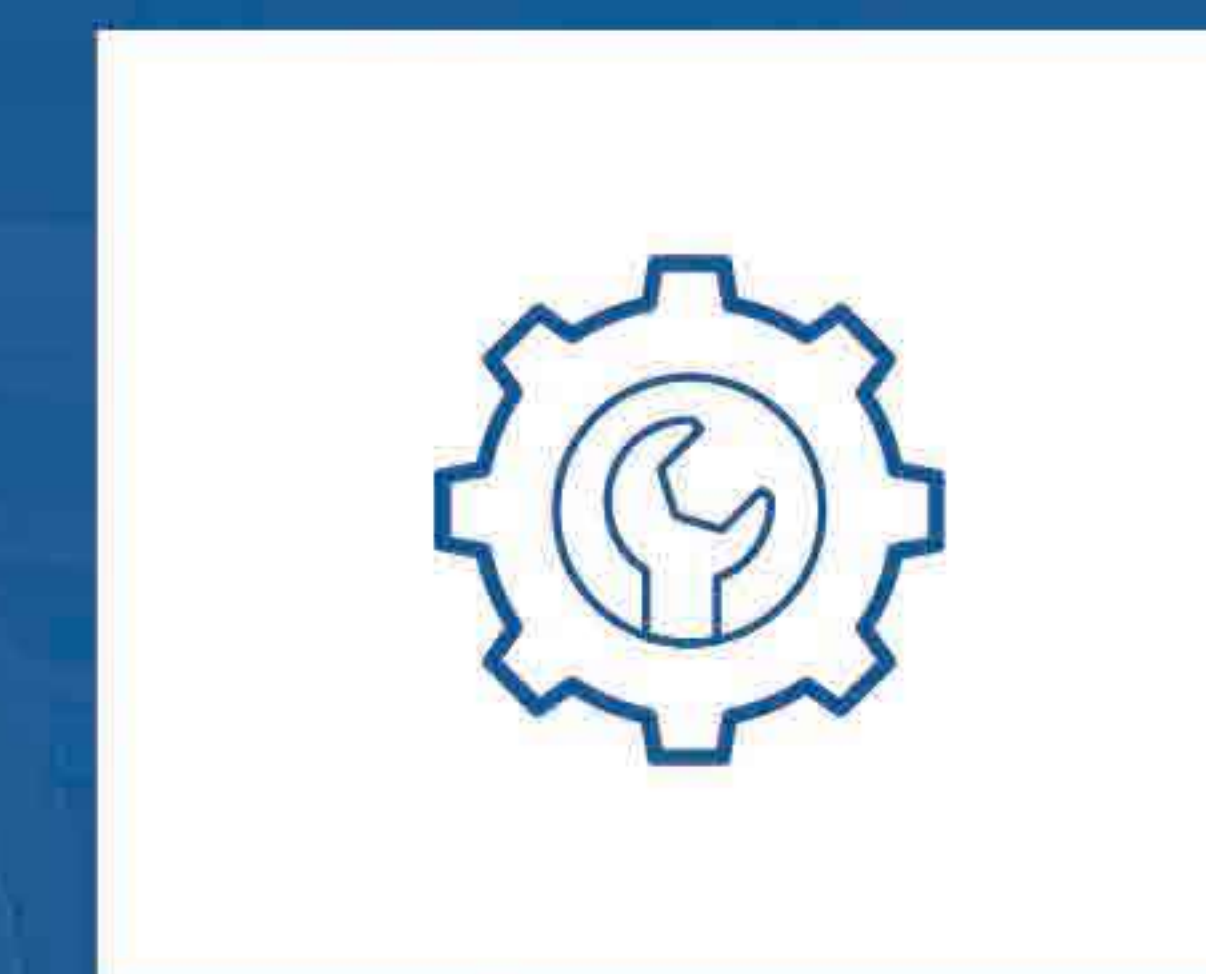


# SERVICE ITEMS



## ACCESSORIES

For conventional products, we have spare parts kits in stock, which can be quickly delivered to the customer's construction site by express at any time, so as to facilitate maintenance or repair.





# QUALITY POLICY

Behind the success, in addition to technical research and development, reasonable management participation is also required. In line with this concept, in R&D production, marketing, sales, after-sales and other links, we follow the quality management system, abide by the code of ethics, and continuously improve and develop the system with the participation of all employees.



## • Supply Chain Control

Stable and reliable raw materials and components are the prerequisites for our production of high-quality products. Our supply chain management system selects high-quality partners such as SEW, Schneider, ABM, and ABB to conduct strict inspections on various components provided.

## • Production and Inspection Control

In the crane production process, there are more than 100 main control nodes, and the quality management system is used to inspect and check each node to ensure that the equipment leaves the factory perfectly.

## • Quality Assurance

Generally speaking, the company's warranty period for cranes is 12 months. However, the quality of the SEVENCRANE brand is more reliable, and we are also very confident in our products, so we can provide 18-24 months of quality assurance for some products and components.